
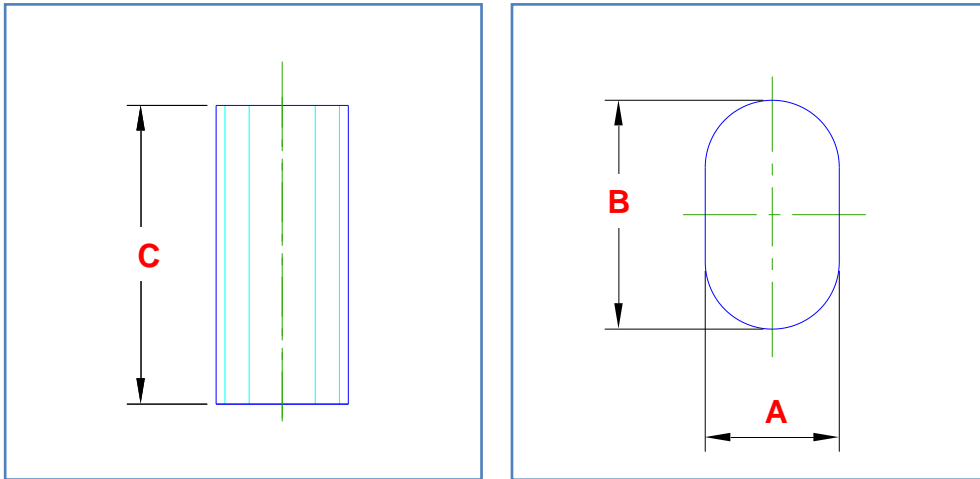

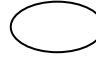



Client Name:		Contact Phone:
Date:	This item ID:	References PO No:
Authorised by:		Signature:
Purchase order to show quantities and date required. PO to reference This Item ID		

<h2>Oval Cylinder - Full</h2> <p>An oval cylinder with square, parallel ends.</p>	
---	---



Dimension	Description	Your dimension
A	<i>Oval Width</i>	
B	<i>Oval Length</i>	
C	<i>Height</i>	

Units of measure (mm, m, inch, etc):				
My dimensions are measured at the (tick one) :		Inside 	Mean 	Outside 
Material Type:		Material Thickness:		

ALL information in this document must be completed to produce a pattern.
 For further information contact details are at www.plate-n-sheet.com.au.

Client Name:		Contact Phone:
Date:	This item ID:	References PO No:
Authorised by:		Signature:
Purchase order to show quantities and date required. PO to reference This Item ID		

Lap Details				
Are overlap allowances to be added to pattern?:		YES <input type="radio"/>	NO (butt joined) <input type="radio"/>	
If YES complete table below				
	Lap Number	Lap size	Notch Angle	
	Lap 1:			
	Lap 2:			
	Lap 3:			
	Lap 4:			
If corners are notched (as shown above) complete Notch Angle column. For example, No notch = 0 or blank, as shown = 90				

Other Settings			
Number of press lines		Number divisible by 4 (default = 24)	
Join Options (Tick one):			
	One part - Joined on the flat.		
	One part - Joined on the radius.		
	Two parts - Joined on the flat.		
	Two parts - Joined on the radius.		

ALL information in this document must be completed to produce a pattern.
 For further information contact details are at www.plate-n-sheet.com.au.