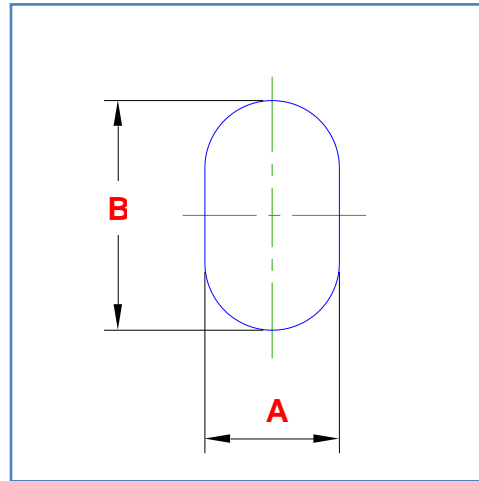
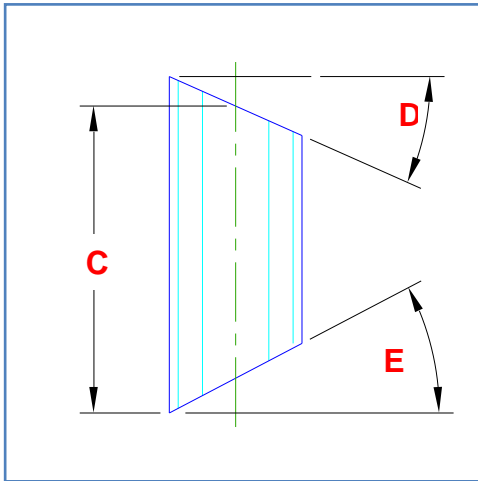





Client Name:		Contact Phone:
Date:	This item ID:	References PO No:
Authorised by:		Signature:
Purchase order to show quantities and date required. PO to reference This Item ID		

Oval Cylinder - Top and Base truncated - Type 1

An oval cylinder cut by two cutting plane across the oval.



Dimension	Description	Your dimension
A	<i>Oval Width</i>	
B	<i>Oval Length</i>	
C	<i>Height (on center line)</i>	
D	<i>Top Cutting Plane Angle</i>	
E	<i>Base Cutting Plane Angle</i>	

Units of measure (mm, m, inch, etc):				
My dimensions are measured at the (tick one) :		Inside 	Mean 	Outside 
Material Type:		Material Thickness:		

ALL information in this document must be completed to produce a pattern.

For further information contact details are at www.plate-n-sheet.com.au.

Client Name:		Contact Phone:
Date:	This item ID:	References PO No:
Authorised by:		Signature:
Purchase order to show quantities and date required. PO to reference This Item ID		

Lap Details					
Are overlap allowances to be added to pattern?:		YES <input type="radio"/>	NO (butt joined) <input type="radio"/>		
If YES complete table below					
	Lap Number	Lap size	Notch Angle		
	Lap 1:				
	Lap 2:				
	Lap 3:				
	Lap 4:				
If corners are notched (as shown above) complete Notch Angle column. For example, No notch = 0 or blank, as shown = 90					

Other Settings			
Number of press lines		Number divisible by 4 (default = 24)	
Join Options (Tick one):			
	One part - Joined on the flat.		
	One part - Joined on the radius.		
	Two parts - Joined on the flat.		
	Two parts - Joined on the radius.		

ALL information in this document must be completed to produce a pattern.

For further information contact details are at www.plate-n-sheet.com.au.