
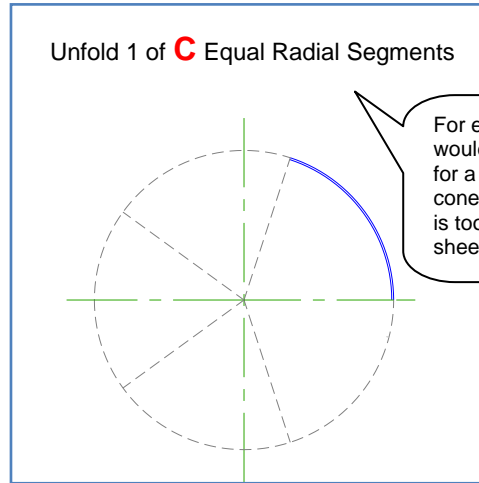
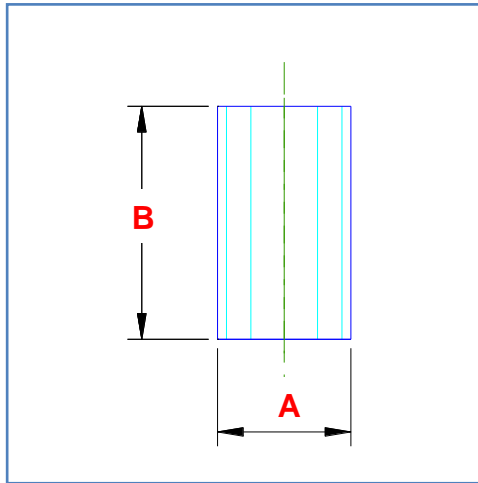





Client Name:		Contact Phone:
Date:	This item ID:	References PO No:
Authorised by:		Signature:
Purchase order to show quantities and date required. PO to reference This Item ID		

<h2>Right Cylinder - Full</h2> <p>A simple right cylinder, defined by the diameter and height.</p>	
--	---



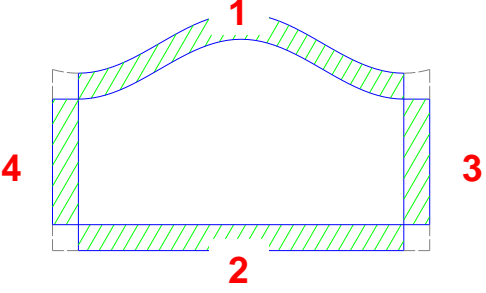
For example, if C=5, this would provide a pattern for a 1/5 segment of the cone. Use when the cone is too large for a single sheet.

Dimension	Description	Your dimension
A	<i>Base Diameter</i>	
B	<i>Height</i>	
C	<i>Number of equal radial segments</i>	

Units of measure (mm, m, inch, etc):				
My dimensions are measured at the (<i>tick one</i>):		Inside 	Mean 	Outside 
Material Type:		Material Thickness:		

ALL information in this document must be completed to produce a pattern.
 For further information contact details are at www.plate-n-sheet.com.au.

Client Name:		Contact Phone:
Date:	This item ID:	References PO No:
Authorised by:		Signature:
Purchase order to show quantities and date required. PO to reference This Item ID		

Lap Details				
Are overlap allowances to be added to pattern?:	YES <input type="radio"/>	NO (butt joined) <input type="radio"/>		
If YES complete table below				
	Lap Number	Lap size	Notch Angle	
	Lap 1:			
	Lap 2:			
	Lap 3:			
	Lap 4:			
If corners are notched (as shown above) complete Notch Angle column. For example, No notch = 0 or blank, as shown = 90				

Other Settings	
Number of press lines	Number divisible by 4 (default = 24)

ALL information in this document must be completed to produce a pattern.
 For further information contact details are at www.plate-n-sheet.com.au.