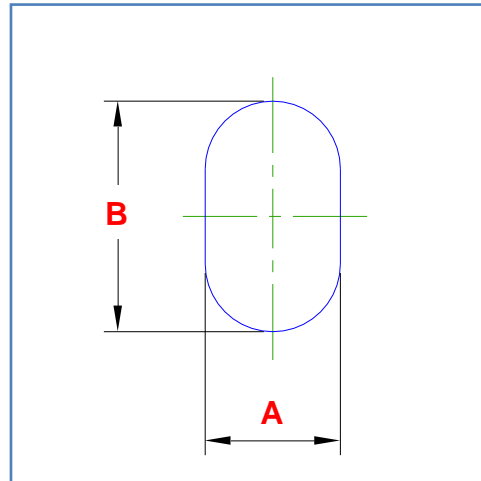
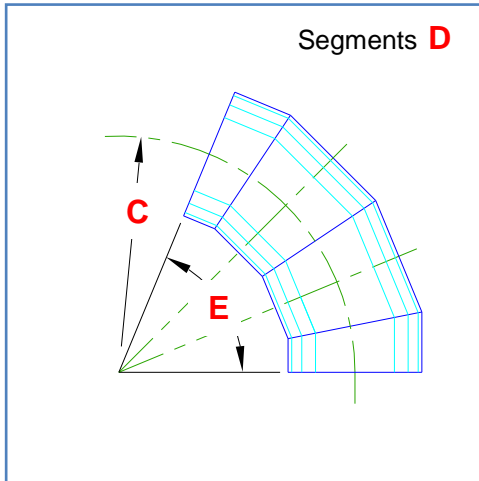


Client Name:		Contact Phone:
Date:	This item ID:	References PO No:
Authorised by:		Signature::
<b>Purchase order to show quantities and date required. PO to reference This Item ID</b>		

## Segmented Bend Oval Angle (Opposite Plane)

A Segmented Bend formed by cylindrical segments. The angle is fixed at 90 degrees



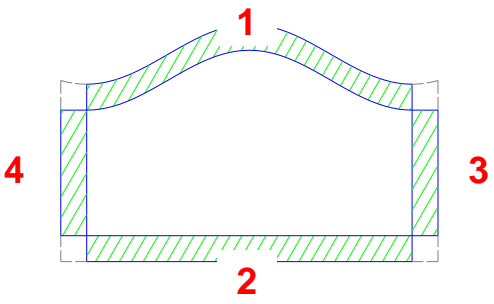
Dimension	Description	Your dimension
<b>A</b>	<i>Oval Width</i>	
<b>B</b>	<i>Oval Length</i>	
<b>C</b>	<i>Bend Radius</i>	
<b>D</b>	<i>Number of segments</i>	
<b>E</b>	<i>Bend Angle</i>	

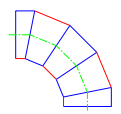
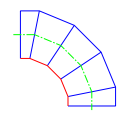
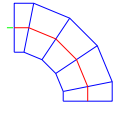
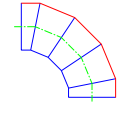
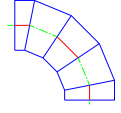
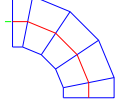
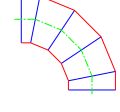
<b>Units of measure (mm, m, inch, etc):</b>				
<b>My dimensions are measured at the (tick one) :</b>		<b>Inside</b> 	<b>Mean</b> 	<b>Outside</b> 
<b>Material Type:</b>		<b>Material Thickness:</b>		

**ALL information in this document must be completed to produce a pattern.**

For further information contact details are at [www.plate-n-sheet.com.au](http://www.plate-n-sheet.com.au).

Client Name:		Contact Phone:
Date:	This item ID:	References PO No:
Authorised by:		Signature::
<b>Purchase order to show quantities and date required. PO to reference This Item ID</b>		

<b>Lap Details</b>				
Are overlap allowances to be added to pattern?:		<b>YES</b> <input type="radio"/>	<b>NO (butt joined)</b> <input type="radio"/>	
<b>If YES complete table below</b>				
	<b>Lap Number</b>	<b>Lap size</b>	<b>Notch Angle</b>	
	<b>Lap 1</b>			
	<b>Lap 2:</b>			
	<b>Lap 3:</b>			
	<b>Lap 4:</b>			
If corners are notched (as shown above) complete Notch Angle column. For example, No notch = 0 or blank, as shown = 90				

<b>Other Settings</b>			
Number of press lines		Number divisible by 4 (default = 24)	
Number of equal segments		Pattern can be full or broken into equal radial segments (default = 1).	
<b>Join Options (Tick one):</b>			
	One seam - Staggered inside and outside of bend.		One seam - Seam on <b>INSIDE</b> of bend.
	One seam - Seam on same side of bend.		One seam - Seam on <b>OUTSIDE</b> of bend.
	One seam - Staggered on sides of bend.		
	<b>Two</b> seams - on <b>both</b> sides of bend.		Two seams - Seam on <b>inside</b> and <b>outside</b> of bend.

**ALL information in this document must be completed to produce a pattern.**

For further information contact details are at [www.plate-n-sheet.com.au](http://www.plate-n-sheet.com.au).