
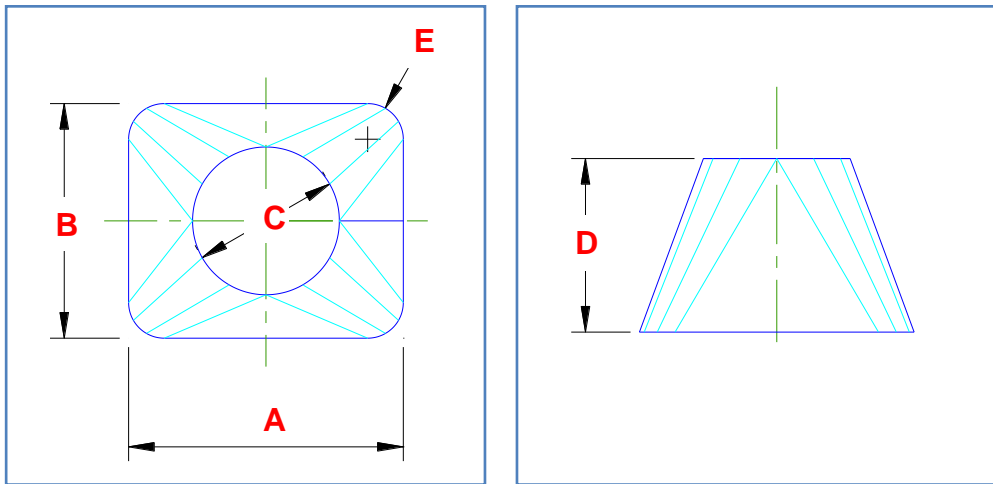





Client Name:		Contact Phone:
Date:	This item ID:	References PO No:
Authorised by:		Signature::
Purchase order to show quantities and date required. PO to reference This Item ID		

<p>Transition - Rectangle To Round A symmetrical rectangle to round transition. The base is a rectangular (different dimensions for length and width).</p>	
---	---



Dimension	Description	Your dimension
A	Base Length X	
B	Base Length Y	
C	Top Diameter	
D	Height	
E	Base Radius	

Units of measure (mm, m, inch, etc):				
My dimensions are measured at the (tick one) :		Inside 	Mean 	Outside 
Material Type:		Material Thickness:		

ALL information in this document must be completed to produce a pattern.
 For further information contact details are at www.plate-n-sheet.com.au.

Client Name:		Contact Phone:
Date:	This item ID:	References PO No:
Authorised by:		Signature::
Purchase order to show quantities and date required. PO to reference This Item ID		

Lap Details

Are overlap allowances to be added to pattern?:	YES <input type="radio"/>	NO (butt joined) <input type="radio"/>
---	-------------------------------------	--

If YES complete table below

	Lap Number	Lap size	Notch Angle	
	Lap 1			
	Lap 2:			
	Lap 3:			
	Lap 4:			

If corners are notched (as shown above) complete Notch Angle column.
For example, No notch = 0 or blank, as shown = 90

Other Settings

Number of press lines		Number divisible by 4 (default = 24)
Number of equal segments		Pattern can be full or broken into equal radial segments (default = 1).

Join Options (Tick one):

	One part - Join on flat side.		One part - Join on diagonal.
	Two parts - Join on flat sides at 180°.		Two parts - Join on diagonal 1.
	Two parts - Join on flat sides at 90°.		Two parts - Join on diagonal 2.
	Four parts - Join on each flat.		Four parts - Join each diagonal.
	8 Parts. Joined on edges of each triangular flat segment		

ALL information in this document must be completed to produce a pattern.

For further information contact details are at www.plate-n-sheet.com.au.